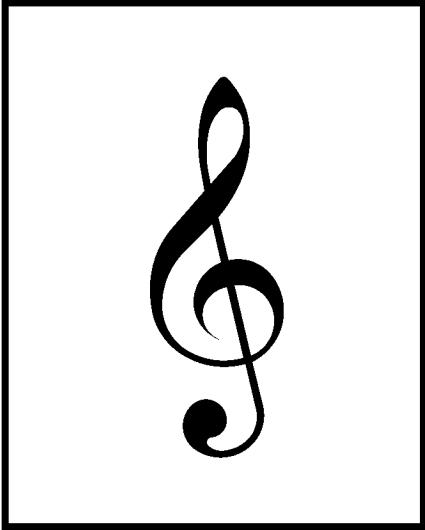


# The Treble Clef

DATE: \_\_\_\_\_  
Sign: \_\_\_\_\_  
COPYRIGHT OCT 1994 C & B SCHOOL OF MUSIC

My name is \_\_\_\_\_

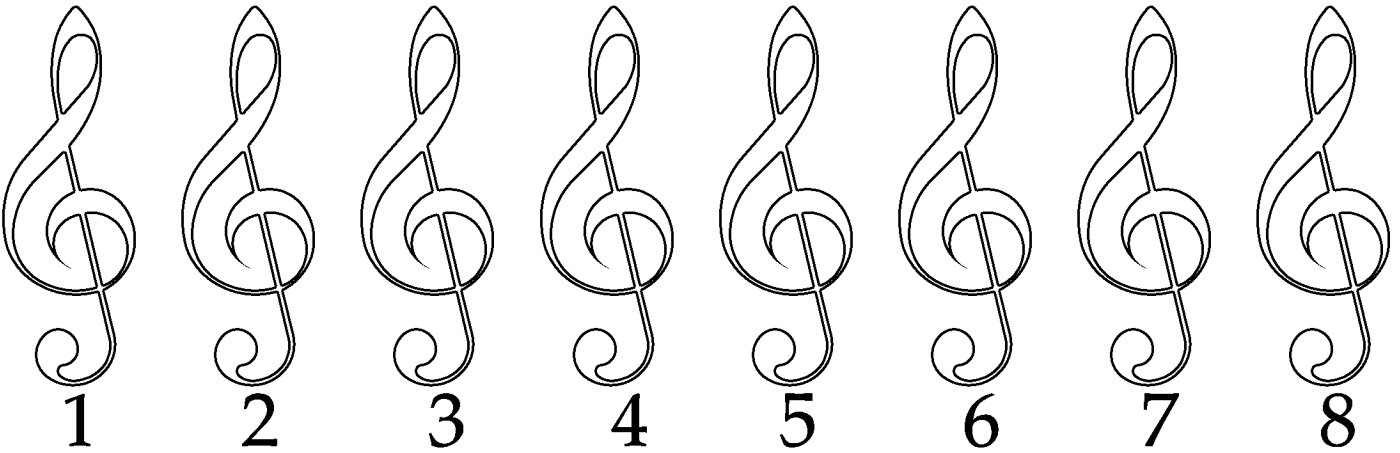
This is a Treble Clef.



COPYRIGHT FEB 1994 C & B SCHOOL OF MUSIC

(Copy the sentence above in box).

Let us colour them - use a felt-tip.



Now, let us trace these over.

Use different colour pens.

